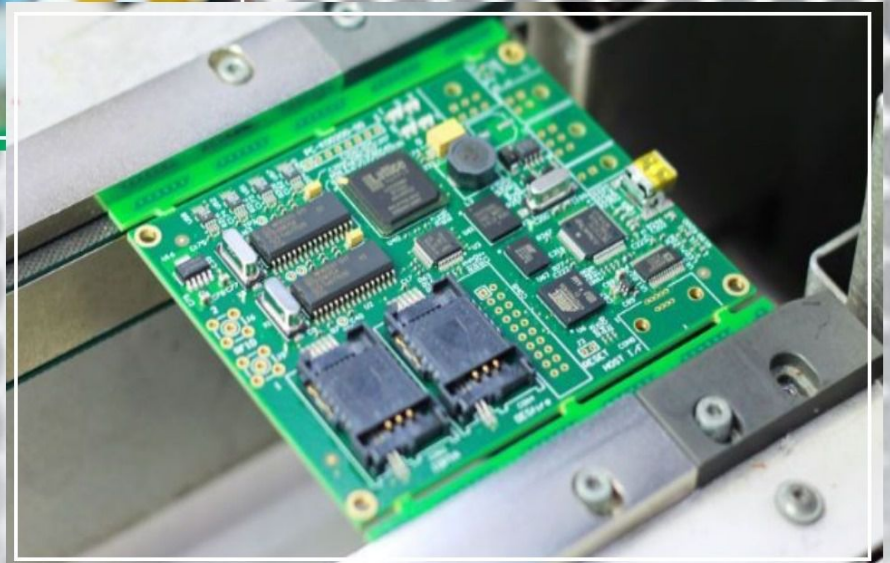
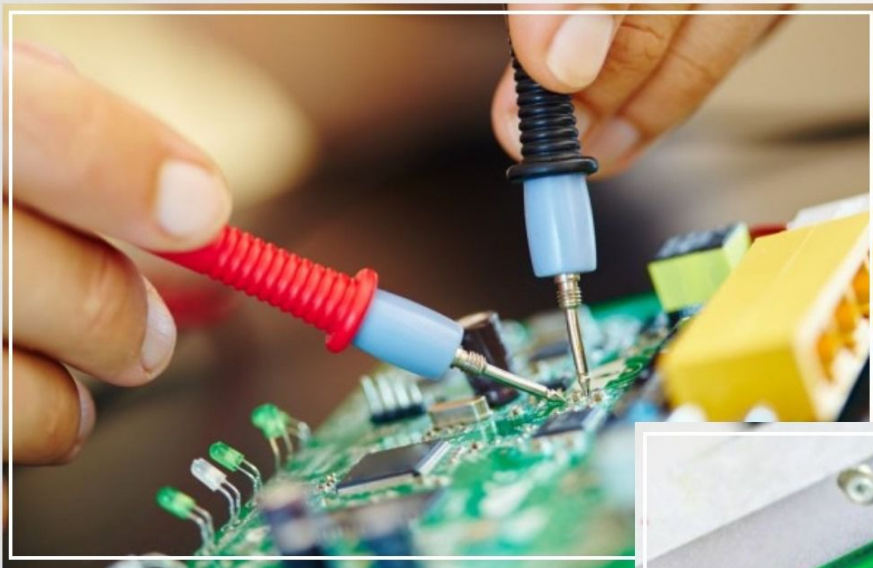




Realtme Technologies is a leading provider of Electronic Manufacturing Services and Integrated Supply Chain Solutions in Europe.



www.realtme.ie
+353 1 848 6112

The Realtme Building,
Clonsaugh Business Park,
Dublin 17, IRELAND

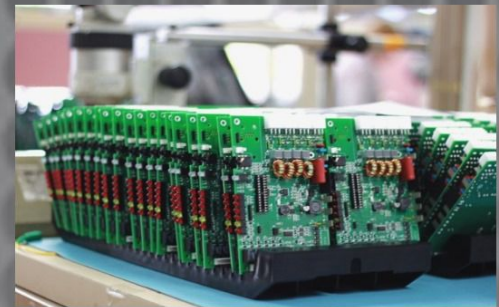
We are dedicated to resolving typical and complex business problems experienced in the electronics industry.



We offer world-class Services from printed circuit board (PCB) design, prototypes, circuit board repair and rework services to complete product assembly.

OUR CAPABILITIES AND SERVICE OFFERINGS:

- Printed circuit board design service
- Volume PCB and Electronic Assembly
- Fully Automated SMT Lines
- ICT and Functional test
- BGA Placement and X-ray inspection
- Fully Integrated Supply Chain
- Post Sales Customer Service



WHY CHOOSE US?

- Reliable PCB Manufacturing & Assembly Provider
- Quality PCBA Manufacturer located in Europe
- Modern production lines
- We don't have any minimum requirements

Realtime Technologies provides the highest quality of PCBA circuit board manufacturing services and electronic repair services. Our facilities got quality standard certificates: ISO9001, AS 9100D and ISO 13485. Our plant has 4 high volume SMT production lines.

Our office is just five minutes from Dublin's international airport and right next to the city's M50 motorway.